



## Flexible, Scalable, High-Density Solutions for AI & HPC

### Solution Overview

**Ingenuity** is a next generation data center solution built for the most demanding cloud and AI/HPC data center customers. We enable HPC, AI Training and AI Inferencing workloads which are foundational in this generational shift to Artificial Intelligence. This includes leading AI providers and their respective applications such as AI Cloud, Large Language Model (LLM) Training and Inferencing deployments.

Our highly flexible designs support dedicated workloads as well as mixed workloads for AI/HPC, all within the same data center. This includes accommodating a variety of power density and cooling requirements for GPU, CPU, storage, and AI networking equipment.

**Ingenuity's** Built-To-Suit design features allow us to accommodate the AI power density and cooling requirements of today, but also flex and scale up to meet the AI needs of tomorrow. We work closely with you to ensure your data center investment achieves long-term operational excellence, scalability and high performance.

We can enable high power densities of up to 80kW+ per rack in China and will evolve and advance as AI/HPC technologies mature. We also work with EdgeConneX, a global leader in AI and hyperscale data center development, to support your expansion around the world.

### Ingenuity Features



#### Time to Market

Supporting customers with ultrafast delivery through efficient and meticulous project management.



#### Future-Proofed, Flexible Design

A flexible design that supports air/liquid cooling technologies to meet today's requirements yet also adaptable for tomorrow's needs.



#### Scalable Data Center Capacity & Densities

Scalable Land, Power, Capacity, and Density means we can efficiently deliver capacity per customer's unique requirements.



#### Global Platform to Support HPC, AI Training and Inferencing

From facilities ideal for AI inferencing to hyperscale campuses meant for large AI training deployments, we work with EdgeConneX to deliver **ingenuity** across 50+ markets.



#### Operational Excellence

Reliable operations with excellent track record in safety, security and customer satisfaction.



## Why use ingenuity for AI and HPC?

### Highly Flexible and Future-Proof Architecture

- Based on the same proven design used to support large enterprises and hyperscalers with zero downtime, this resilient foundation allows you to focus on your core business with peace of mind.
- Each Data Hall can adapt to support a mix of air and liquid cooling technologies and densities.

### Eliminates Technology Lock-in, Allows for Dynamic Refresh

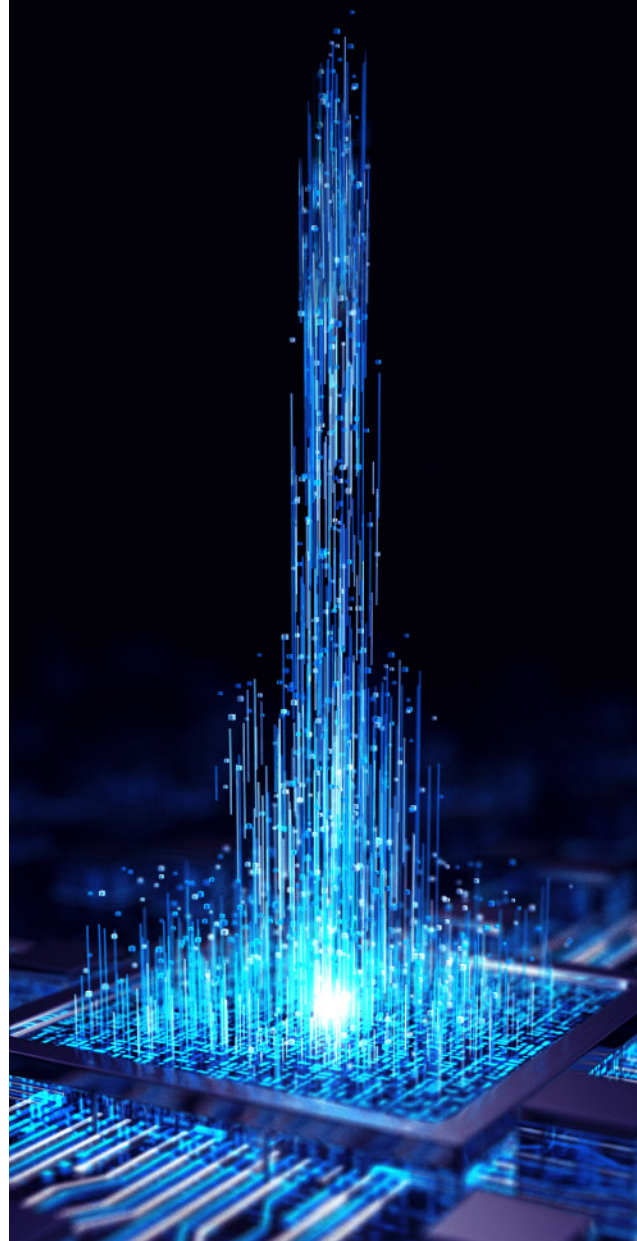
- **Reinforced Building:** Our high-density design supports the necessary weight requirements for added liquid cooling infrastructure.
- **De-Coupled Electrical Systems:** Ingenuity's electrical infrastructure supports a full range of rack densities and cooling technologies and can scale as needed over time.
- **Chilled Water Plant:** We have the flexibility to balance varying IT loads within the same data hall, leveraging built-in thermal storage for continuous cooling capabilities.
- **Programmable White Space:** Caters for incremental infrastructure like liquid piping and bulk fiber connectivity, accommodating CPU, GPU or mixed AI workloads.

### Architectural Approach Balances the Costs vs Design Trade-offs

- Ingenuity enables technology transitions and provides optionality to support future densities in cost-effective manner as compute technologies evolve.
- Provides power densities of up to 80kW per rack in China and beyond in overseas markets through our partnership with EdgeConneX.
- Start with one of three deployment configurations and customize it to meet your precise requirements.

### Extensive Pedigree Delivering Next Generation Solutions

Chayora and EdgeConneX has a long track record of data center innovation that is first and foremost focused on our customers' needs. Partner with us and our wide range of Build-To-Suit data center solutions to help turn your vision into reality, for both now and years to come.



## Why Partner With Chayora

Chayora is committed to becoming a premium Build-To-Suit data center expert. We help customers turn vision into reality through our iconic capabilities and continuous growth. Let us help you accelerate your business and expansion strategy.



### Rapid Delivery of Premium Facility

We have succeeded in delivering hyperscale data center facilities in record speed and with high quality. We can help you achieve the same and customize per your specific business needs.



### Flexible & Diverse

We excel at tailoring solutions to our customers' technology paths, supporting a wide range of models and best-in-class use cases to ensure that the completed data center is operationally robust and highly available today and in the future.



### Deep "Copilot" Collaboration

Our team is fully engaged across all stages of a data center project and maintains frequent and tight cooperation with the client. We value the experience of our customers and stick to an efficient "See it. Own it. Solve it." approach with quick response.



### Meticulous & Precise

The project management plan we use is precise and meticulous to enable efficient and orderly parallel construction work streams. Coupled with frequent follow-up on finer details of the project, our customers can better understand the progress and have high confidence in our delivery efficiency and quality.